

**Je** FINE ART GALLERY  
Artist's Collection

村上隆

TAKASHI MURAKAMI

# 村上隆 | TAKASHI MURAKAMI

前有安迪·沃霍尔(Andy Warhol)，后有村上隆(Murakami Takashi)。商业元素和消费文化是他们的艺术创作中不可分离、乃至致力于探索的部分。要说模糊高雅艺术和通俗文化的界限，安迪·沃霍尔不是第一个，村上隆也绝对不是。但能把超通俗、超商业、超“幼稚”的视觉艺术带到凡尔赛宫展出，之后还正儿八经地发表《幼稚力宣言》的，村上隆可谓是独一无二。

出生在战后东京的村上隆，正遇上经济飞速发展，消费主义爆棚的时代。他是少数将日本流行文化作为艺术创作主题传播至国际舞台的日本当代艺术家，而动画(Animation)－漫画(Comics)－电玩(Game)，也就是所谓的ACG，作为一种极富日本特色的文化，从小就对村上隆产生了深刻影响，更是他作品的一大灵感来源。在发表《幼稚力宣言》之前，这位宣言狂人就曾在1996年发表过《超扁平宣言》：“将来的社会、风俗、艺术、文化，都会像日本一样，都变得极度平面……今天，日本电玩和卡通动画最能表现这种特质，而这些又在世界文化中具有强大的力量。”

所谓“超扁平”(Super-flat)，就跟它的名字一样直白，即指以日本动漫为根源的纯二维(Two-dimensional)的画面。在好莱坞疯狂追求CG动画的逼真度的当下，日本动漫仍坚持着二维动画的创作，可见日本文化对“平面”的情有独钟。这其中以浮世绘为代表的传统日本画的影响不可忽视，这也是村上隆曾经系统学习过的艺术形式。与西方艺术脉络截然不同的风格理念，也是村上隆在国际艺术舞台，特别是西方艺术界广受欢迎的原因之一。

不具备任何写实性的画面充满了幻想感，却不似抽象艺术那样晦涩，视觉上来说，可谓是人人都能享受其中乐趣。另外，与安迪·沃霍尔大量运用现成的流行图案(Ready-made images)不同，村上隆代表性的视觉符号皆为他个人的原创，比如最为著名的太阳花。

如果说安迪·沃霍尔是以一种高冷的态度评价“量产”，那村上隆对同一图像元素的不同重复制造出令人眼花缭乱的视觉效果，以及神经质的、甚至是暗含癫狂的绚烂色彩与夸张造型，可谓是现代消费主义影响下人们精神状态的具像化体现，就像艺术家本人曾经说过“我的创作方式是要抓住人们的欲望”——而从这个角度来说，看似欢乐、“幼稚”的画面下，似乎又隐含着黑暗的色彩。

另一方面，这种超扁平，超“幼稚”的风格让他在对艺术商业化的探索中也获得了巨大成功。他的作品《727》以超过一亿日圆高价卖出，让他成为日本作品拍卖价格最高的现代艺术。法国奢侈品大牌Louis Vuitton (LV) 也频频与他合作，装饰有他设计图案的LV手袋，每只售价高达5000美元。

村上隆从不乏追随者，他的作品中看似“幼稚”的吸引力，“幼稚”的追求，都是对当今流行文化最深刻的映射，就像他说的，“扁平”中有着巨大的表现力和强大的力量，令他的作品风靡全球。

## 村上隆 | TAKASHI MURAKAMI

Andy Warhol of the west and Takashi Murakami of the east, are icons of consumerism arts of different generations. Speaking of blurring the line between high arts and popular culture, Warhol was not the first one to practice, and neither was Murakami. However, being so “serious” and so successful as far as to bring the super-pop, super-commercial and super-“childish” arts into an iconic domain of high arts and cultures like the Versailles, Murakami is the unique one.

Born in the after-war Tokyo, Murakami encountered the age of rapid economic development and the explosion of consumerism. He is one of the few Japanese contemporary artists who managed to use Japan-oriented pop culture as the subject of his arts and landed it onto an international stage. Japanese Animation, Comics and Game, the famous abbreviation being ACG, influenced Murakami deeply from a very young age, and later on became the major inspiration of his. Before releasing *The Declaration of the Power of Childishness*, the artist had released *The Declaration of the Super-flat* in 1996, and in it he said, “the future society, custom, arts and cultures will all be like Japan, extremely two-dimensional...Nowadays, Japanese video games and cartoons are able to show such features, which exert impressive power to the world.”

The so-called “super-flat” is very much self-explanatory, used to describe the arts based on the origins of Japanese two-dimensional animation and comics. These images bear absolutely no illusion of the realistic, full of the sense of fantasy, while not as obscure as, say, abstract arts. In other words, they are easy to consume, which is precisely the vision of Murakami and the spirit of consumerism. Unlike the works of Warhol where ample ready-made images are exploited, the visual signs in Murakami’s paintings are mostly original, such as the most famous one, the sunflowers; the skulls, often discussed in relation to the topic of death, in dramatic contrast to its “cute” style; and the fashion icon, MR. DOB.

Compared with Warhol’s somehow distant attitude in his comments on the mass production, Murakami’s repetition of the same motif with a variety of shapes and colors which giving a sense of implied insanity and craziness, visualizes the mental state of people under the influence of consumerism in nowadays society. The artist himself stated once that “my way of creation is to grasp people’s desire”- from this perspective, there seems to be a ever present dark undertone in his works.

On the other hand, his arts style and exploration in the world of consumerism lead him to huge commercial success. His work 727 was sold with a price over a hundred million yen (over 9.7 million US dollars), making it the highest priced Japanese contemporary artworks. The prestigious French luxury brand Louis Vuitton also sought to work in collaboration with him for more than once.

## 村上隆 | TAKASHI MURAKAMI

本次杜若云章画廊举办村上隆个展，展出多幅珍贵村上隆代表作品版画，包括他最富盛名的太阳花系列、骷髅头系列、MR.DOB系列，以及最新在东京举办个展时展出的《500罗汉》。

其中《500罗汉》更是2015东京森美术馆村上隆五百罗汉展览官方出品，带艺术家亲笔签名全球限量30版。

This time Je Fine Arts Gallery assembled a collection of prints of Murakami's most celebrated works including the series of the sunflowers, the skulls, MR. DOB, and the 500 Arhats displayed in his latest exhibition in Tokyo, with the artist's autograph. The seemingly "childish" attraction and pursuit in Murakami's works are in fact profound reflection of contemporary popular culture, which makes his works a universal phenomenon and sought after all over the word.



# 罗汉系列

THE SERIES OF ARHATS



500罗汉 | The 500 Arhats

2015

纯手工印染 棉布 | 布面版画

35×90cm

村上隆亲笔签名全球限量30版，无具体版号



四罗汉 | 4 Arhats, One With Four Eyes

2013

胶印版画 | Offset lithograph

限量300版 | Edition of 300

68x68cm

十二罗汉 | 12 Arhats

2015

胶印版画 | Offset lithograph

限量300版 | Edition of 300

68x68cm





精神分割 | Assignment of a Spirit

2014

胶印版画 | Offset lithograph

限量300版 | Edition of 300

68x68cm

空想 | Phantasma

2015

胶印版画 | Offset lithograph

限量300版 | Edition of 300

68x68cm





看! 这是冥界 | Behold! This the Nether world

2014

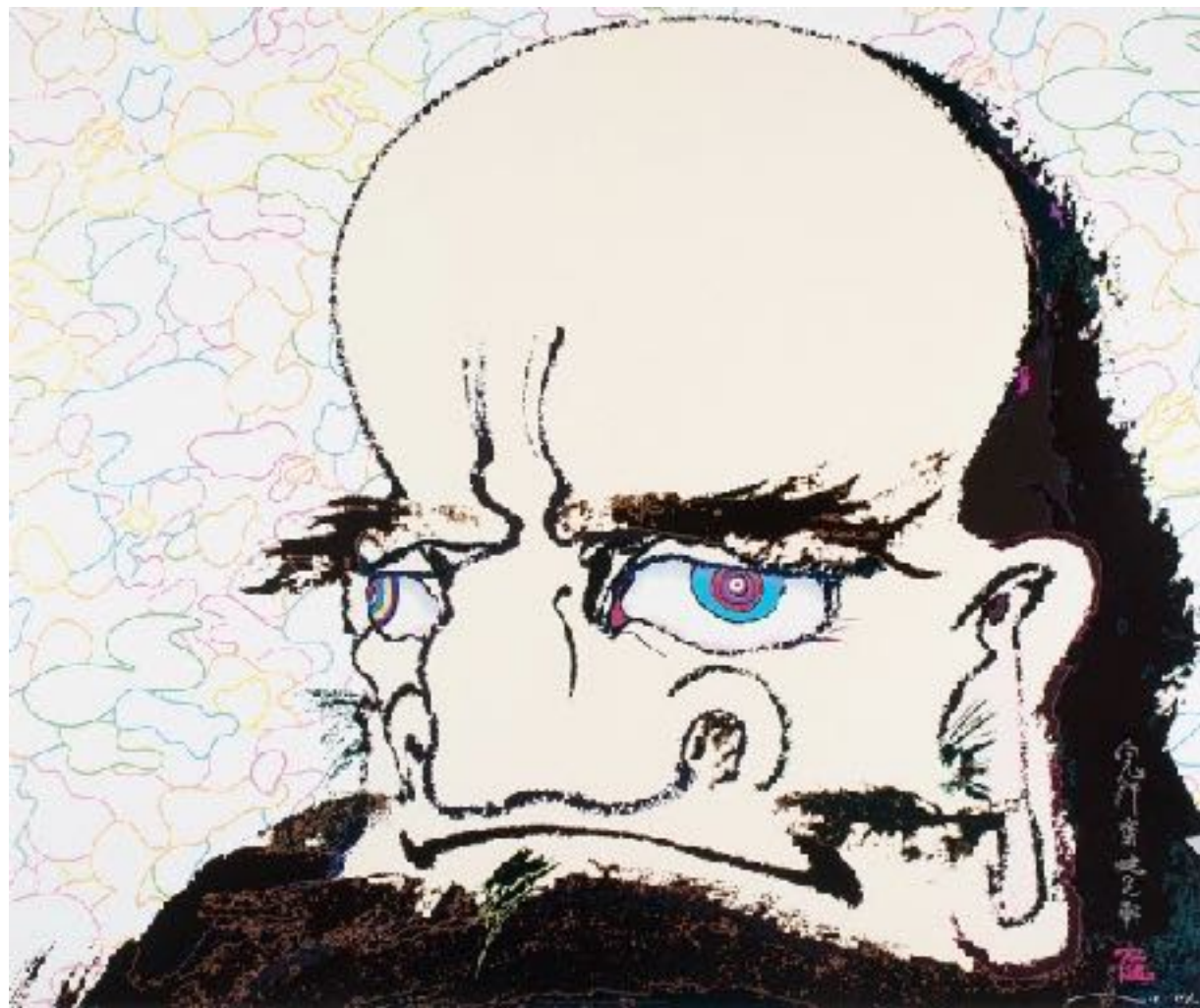
胶印版画 | Offset lithograph

限量300版 | Edition of 300

68×68cm

千里眼 | Clairvoyance  
2015  
胶印版画 | Offset lithograph  
限量300版 | Edition of 300  
68x68cm





禅宗老祖达摩

In the heart's eye, a universe

2007

胶印版画 | Offset lithograph

147/300

70x84cm



24K纯金箔涂层黄金罗汉五件套

2015

PVC

每件高5-8cm不等

盒子尺寸：13x26x13cm

村上隆亲笔签名全球限量50版，无具体版号

骷髏系列  
THE SERIES OF SKULLS

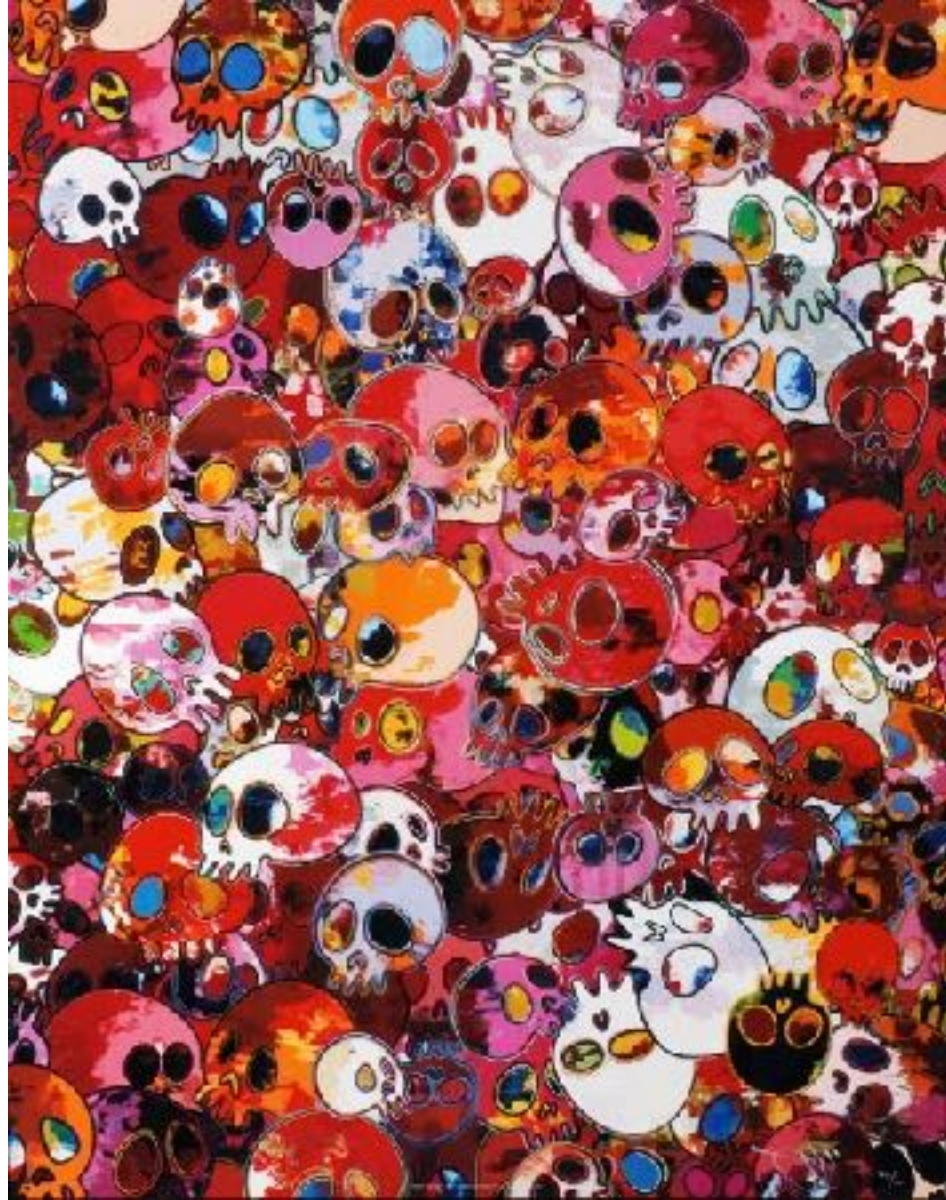
红色骷髅 | MCRST, 1962 – 2011

2011

胶印版画 | Offset lithograph

134/300

60×75cm





蓝色骷髅 | MCBST, 1959-2011

2011

胶印版画 | Offset lithograph

79/300

60×75cm

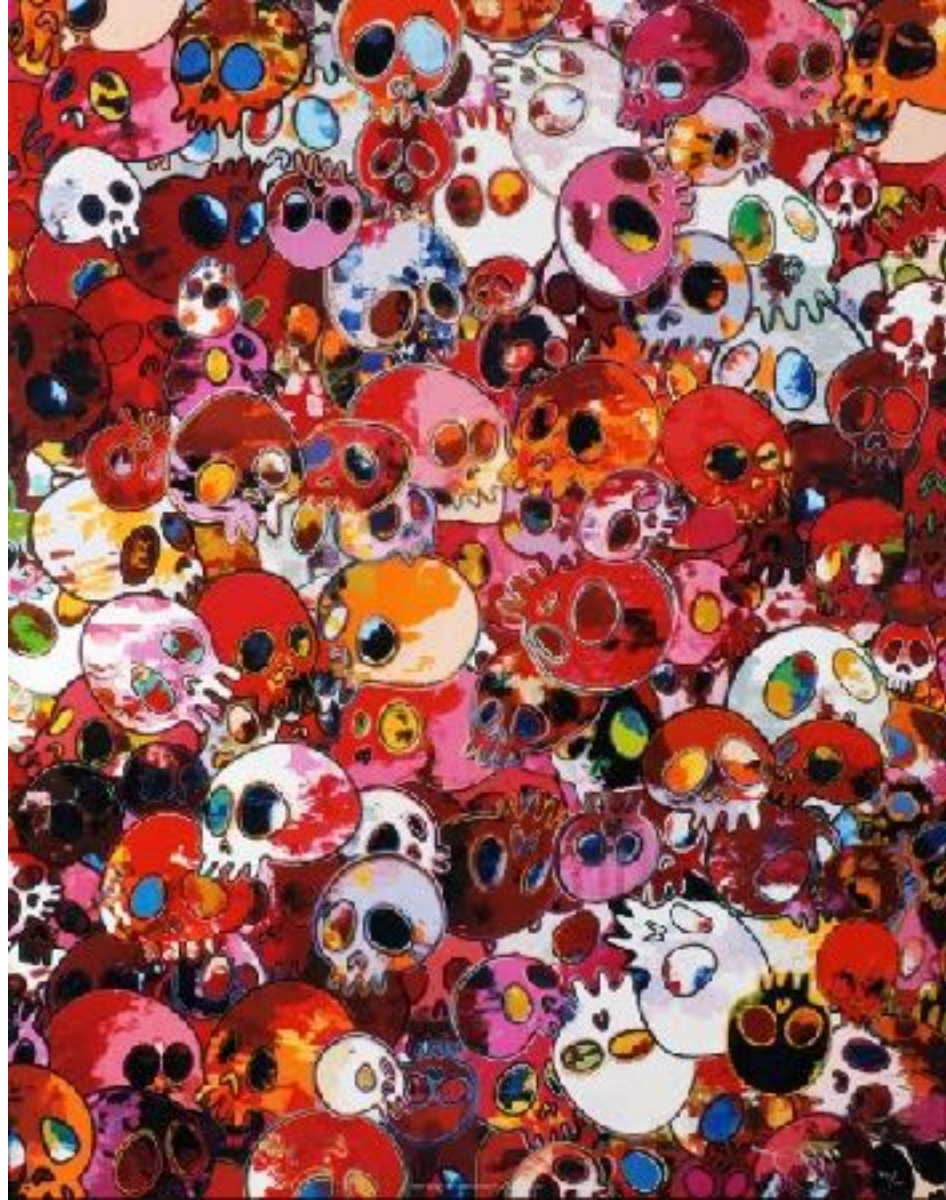
红色骷髅 | MCRST, 1962 – 2011

2011

胶印版画 | Offset lithograph

83/300

60×75cm





蓝色骷髅 | MCBST, 1959-2011

2011

胶印版画 | Offset lithograph

80/300

60×75cm

# 熊猫系列

THE SERIES OF PANDAS

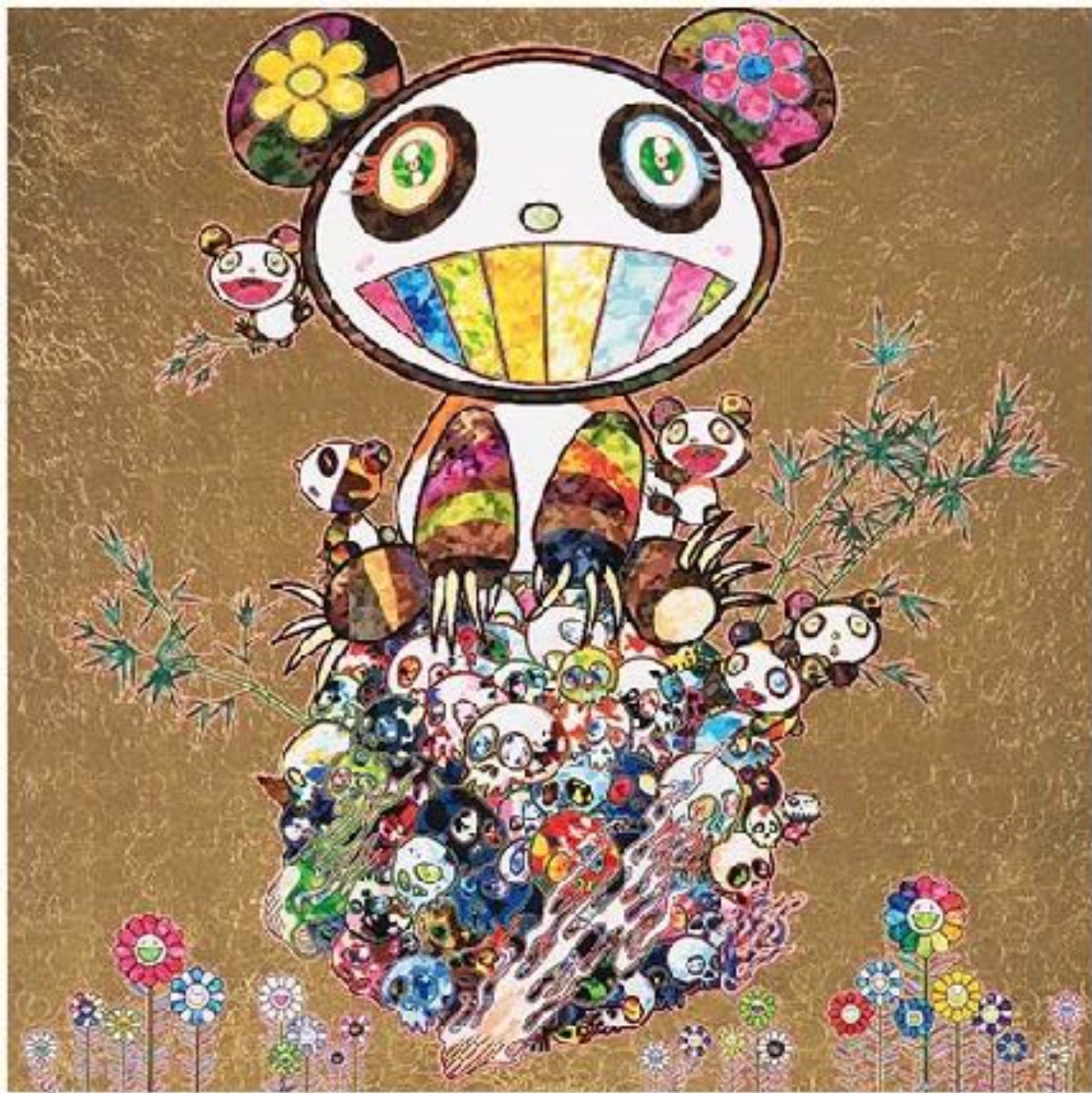
现实凝视 | With Eyes on the Reality

2015

胶印版画 | Offset lithograph

限量300版 | Edition of 300

50×50cm





熊猫与熊猫仔 | Panda & Panda Cubs

2015

胶印版画 | Offset lithograph

限量300版 | Edition of 300

50×50cm

熊猫说他们很开心  
The Pandas Say they are happy  
2014  
胶印版画 | Offset lithograph  
限量300版 | Edition of 300  
50×50cm



# Mr. DOB系列

THE SERIES OF Mr. DOB



727×999

2016

胶印版画 | Offset lithograph

限量300版 | Edition of 300

65.7×98cm



727×777

2016

胶印版画 | Offset lithograph

限量300版 | Edition of 300

65.7×98cm

平行宇宙(绿舌头) | Spiral (green)  
2014  
胶印版画 | Offset lithograph  
141/300  
70×70cm





平行宇宙(红舌头) | Parallel Universe (red)

2014

胶印版画 | Offset lithograph

103/300

70×70cm

然后... (海蓝)  
And Thenx6, Marine Blue: The Superflat Method  
2013  
胶印版画 | Offset lithograph  
61/300  
50x50cm





从那以后x 6(超扁平，粉蓝耳)  
And Then x 6(White:The Superflat Method,Pink  
and Blue Ears)

2013

胶印版画 | Offset lithograph

155/300

50x50cm

# 致敬系列

THE SERIES OF HOMAGE

致敬系列  
An Homage to IKB 1957  
2011  
胶印版画 | Offset lithograph  
179/300  
53×74cm





致敬系列 | An Homage to Yves Klein, Multicolor A  
2012

胶印版画 | Offset lithograph

限量300版 | Edition of 300

74×53cm

致敬系列 | An Homage to Yves Klein, Multicolor B  
2012  
胶印版画 | Offset lithograph  
限量300版 | Edition of 300  
53×73.8cm





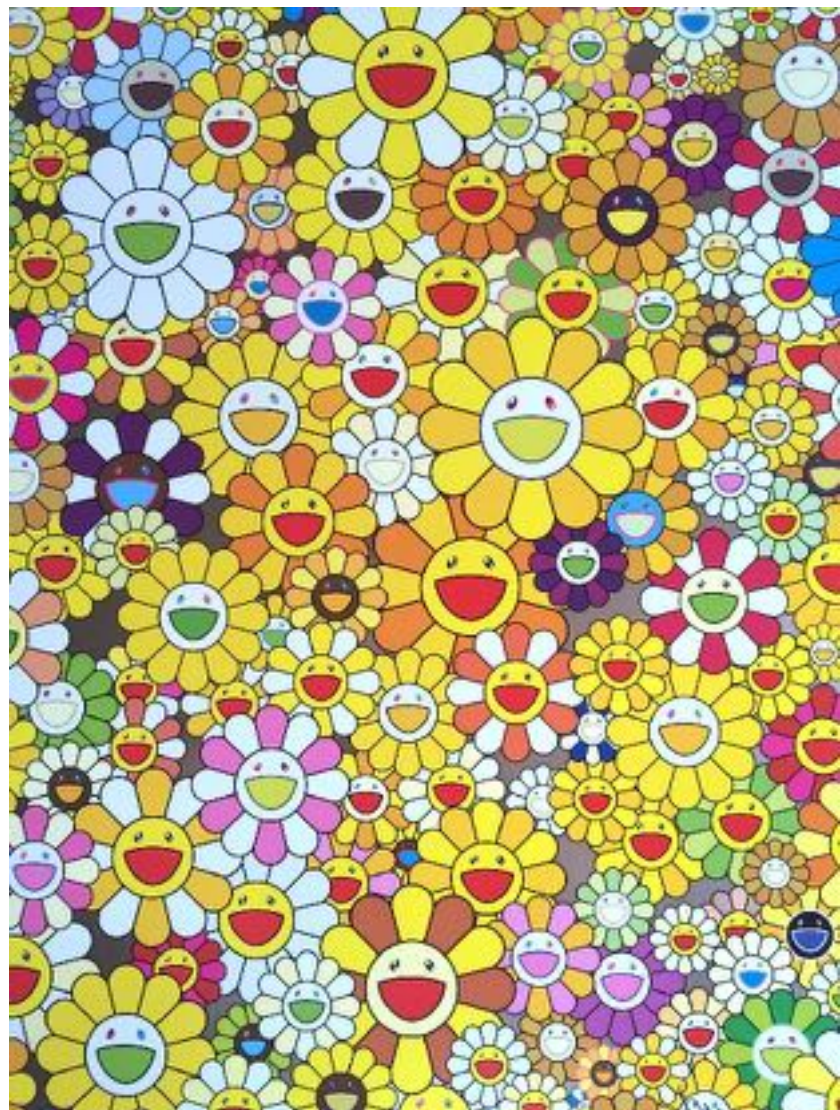
致敬IKB 1975 D | An Homage to IKB, 1957  
2012

胶印版画 | Offset lithograph

141/300, 186/300  
53×74cm

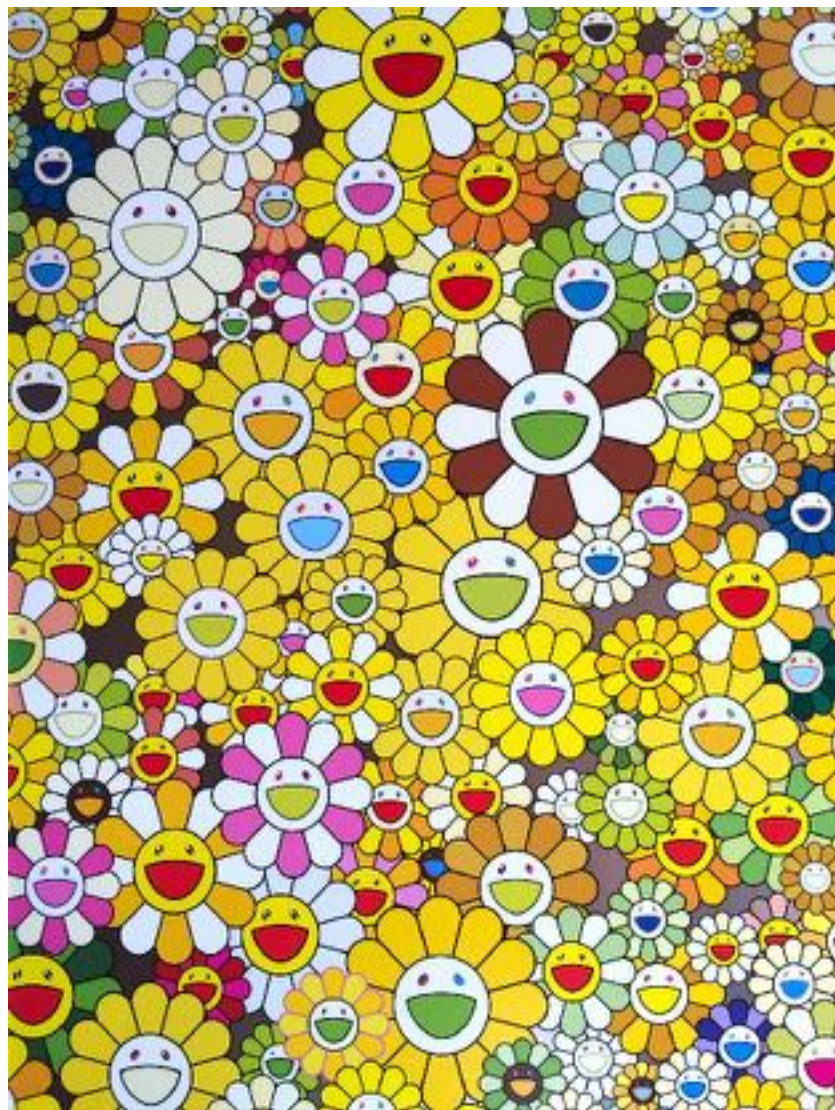
致敬系列  
An Homage to Monopink 1960 B  
2012  
胶印版画 | Offset lithograph  
191/300  
53×74cm

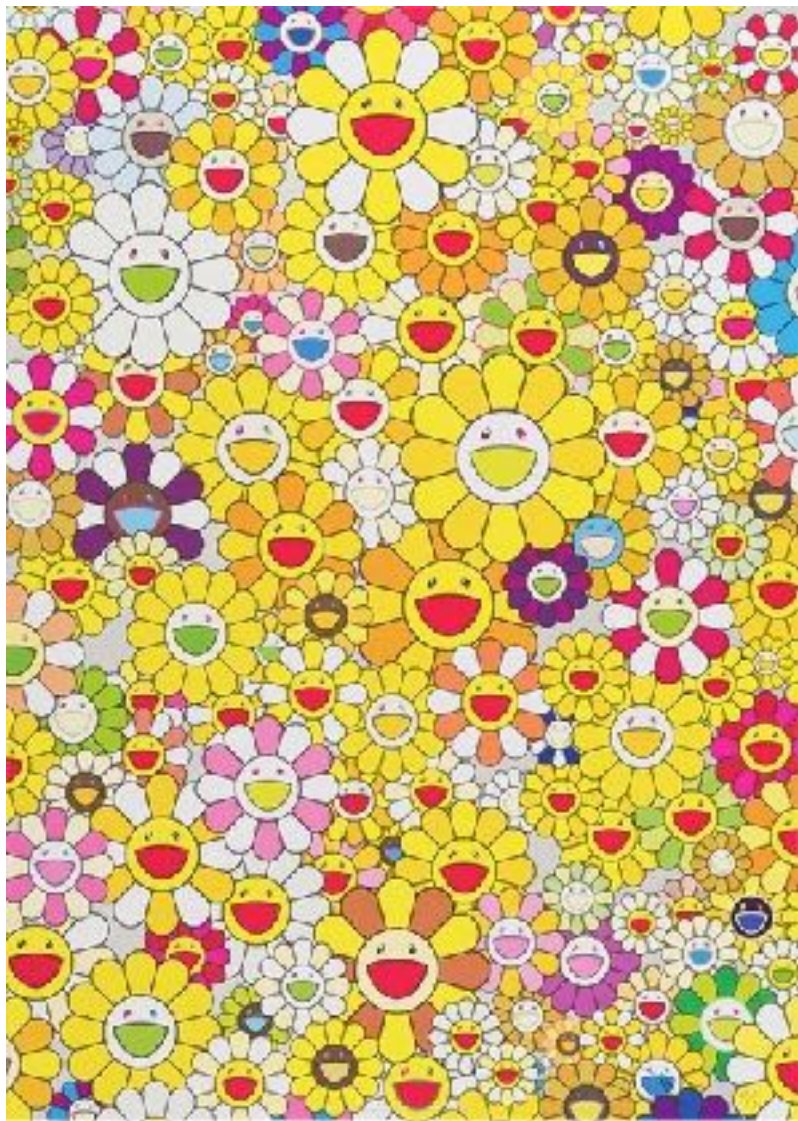




向金色致敬 1957A  
An Homage to Monogold, 1957 A  
2012  
胶印版画 | Offset lithograph  
限量300版 | Edition of 300  
74x53cm

向金色致敬 1957C  
An Homage to Monogold, 1957 C  
2012  
胶印版画 | Offset lithograph  
限量300版 | Edition of 300  
74×53cm





向金色致敬 1957D  
An Homage to Monogold, 1957 D  
2012  
胶印版画 | Offset lithograph  
限量300版 | Edition of 300  
74×53cm

圆系列  
THE SERIES OF ENSO

圓：向吉原治良致敬 金 | Amitabha Buddha  
2015  
胶印版画 | Offset lithograph  
102/300  
68×68cm





圆：向吉原治良致敬 银 | Agama

2015

胶印版画 | Offset lithograph

80/300

68×68cm

圆：向吉原治良致敬 红  
Enso: Memento Mor Red  
2015

胶印版画 | Offset lithograph  
52/300  
68×68cm





圆：向吉原治良致敬 罗刹 | Enso: The Heart

2015

胶印版画 | Offset lithograph

48/300

68×68cm

圆：向吉原治良致敬 金刚 | Enso: Earthly Desires

2015

胶印版画 | Offset lithograph

80/300

68×68cm



# 自画像系列

THE SERIES OF  
SELF-PORTRAIT



熊猫家庭和我 | Panda Family and Me

2013

胶印版画 | Offset lithograph

29/300

50x50cm

我遇见一个熊猫家庭 | I Met a Panda Family

2013

胶印版画 | Offset lithograph

147/300

50x50cm





穿越百年的现实之眼  
With Eyes on the Reality of One Hundred Years  
from Now Yongyue

2013

胶印版画 | Offset lithograph

27/300

50×50cm



我和Mr. DOBs | Me and Mr. DOBs

2013

胶印版画 | Offset lithograph

92/300

50×50cm



死亡指引下，花生得美丽  
With the Notion of Death, the Flowers Look  
Beautiful

2013

胶印版画 | Offset lithograph

28/300

50×50cm



哲学空间 | A Space for Philosophy

2013

胶印版画 | Offset lithograph

37/300

50×50cm

# 太阳花系列

THE SERIES OF  
SUN FLOWERS



沃霍尔 银  
Warhol Silver  
2010  
胶印版画 | Offset lithograph  
116/300  
71cm



宇宙 | Cosmos

2000

胶印版画 | Offset lithograph

215/300

60x60cm

宇宙 | Cosmos  
2000  
胶印版画 | Offset lithograph  
48/300  
60x60cm





漂浮露营地

Floating Campsite

2011

胶印版画 | Offset lithograph

限量300版 | Edition of 300

71cm(画芯)

90x90cm(装裱)

金色太阳花  
Warm And Sunny  
2011

胶印版画 | Offset lithograph

限量300版 | Edition of 300

68x68cm(画芯)

90x90cm(装裱)





香格里拉，香格里拉，香格里拉  
Shangri-La Shangri-La Shangri-La

2016

胶印版画 | Offset lithograph

102/300

68×68cm

Shangri-La Pink | 香格里拉 粉色

2012

胶印版画 | Offset lithograph

80/300

60x60cm





针灸/花 | Acupuncture/Flowers

2008

胶印版画 | Offset lithograph

114/300

50.01×50.01cm

爱の花束 | Flowers of Love  
2012  
胶印版画 | Offset lithograph  
限量300版 | Edition of 300  
68x68cm





目をつぶるとシャングリア  
When I close my eyes, I see Shangri-La  
2012  
胶印版画 | Offset lithograph  
115/300  
68×68cm

香格里拉 蓝 | Shangri-La Blue

2012

胶印版画 | Offset lithograph

55/300

68x68cm





花们

Right There, The Breadth of the Human Heart

2012

胶印版画 | Offset lithograph

101/300

70×70cm

关于马蒂斯  
Thoughts on Matisse  
2016  
胶印版画 | Offset lithograph  
限量300版 | Edition of 300  
71cm



红流  
Kansei Korin Red Stream  
2009  
胶印版画 | Offset lithograph  
164/300  
71cm





心灵建筑师 | Architect of the Heart

2010

胶印版画 | Offset lithograph

31/300

71cm

回忆我脚尖离地的瞬间，从未如此轻盈-润声·菊  
I Recall The Time When My Feet Lifted Off The  
Ground, Ever So Slightly - Korin – Chrysanthemum

2009

胶印版画 | Offset lithograph

172/300

71cm



# 综合系列

THE SERIES OF OTHERS



水母的眼睛 | Jellyfish Eyes - White 4

2006

胶印版画 | Offset lithograph

70/300

50.01×50.01cm

乳汁少女 | Hiropon

2001

胶印版画 | Offset lithograph

298/300

50x50cm



乳白少女 | Hiropon  
2001  
298/300  
50x50cm  
Offset lithograph  
Printed on 100% cotton paper  
Signed and numbered by the artist  
Hiropon 2001



惊喜 | Surprise (AKB 48)

2009

胶印版画 | Offset lithograph

231/300

71.5×71.5cm



櫻花 | Sakura

布面版画 | Print on Canvas

版数30 | Edition of 30

21×94cm

太阳花抱枕  
Cosmic Pillow  
毛绒填充|Plush Filling  
Open Addition  
90cm





*ComplexCon: Mr. DOB,*  
2016

树脂 | Cast resin polychrome sculpture

Edition of 750  
26.7 × 26 × 26 cm



*ComplexCon: Mr. DOB,*  
2016

树脂 | Cast resin polychrome sculpture

Edition of 250  
26.7 × 26 × 26 cm



FINE ART GALLERY

## 杜若云章画廊

上海市永嘉路 498 号,近岳阳路  
498 Yongjia Road, Shanghai China

mail: je@jeloveart.com

Weibo: @ 杜若云章画廊

Wechat: @JEgallery

Telephone: (+86)021-64157709

Facebook: JEgallery

Instagram: JEFINEARTGALLERY

